

TECHNICAL DATA

NUMBER	
ELEVATOR TYPE	
CONTROL	
CAPACITY	
SPEED	
SERVICE FL.	1-4
TOTAL	
CAR DOOR TYPE	
HOISTWAY SIZE	
CAR NET SIZE	
DOOR SIZE	
DIM. IN	MILLIMETERS (mm.)
GUIDE RAIL CAR	
GUIDE RAIL CWT	
ROPES SLING	
MOTOR TYPE	
MODEL NO.	
MOTOR POWER	
ROPING	
BRACKET	

REACTION LOAD(KN)

P1	P2	P3	P4
100	80	60	50

SPECIAL NOTE (BY OTHERS)

- VOLTAGE FUNCTION SHALL BE WITHIN A RANGE OF + 5 %~-10 %.
- TEMPERATURE OF MACHINE ROOM SHALL BE BELOW 40°C.
- THE FOLLOWING CONDITIONS ARE REQUIRED FOR MAINTAINING PERFORMANCE OF THIS ELEVATOR.
 - MOISTURE SHOULD BELOW 90 % ON MONTHLY AVERAGE AND BELOW 95 % ON DAILY AVERAGE.
 - MACHINE ROOM AND ELEVATOR SHAFT SHOULD HAVE NO DUST OR CHEMICAL HARMFUL GAS.
 - WALLS, FLOORS AND CEILINGS OF MACHINE ROOM MUST BE FINISHED BY MOTAR OR OTHERS TO PREVENT THE DUSTS OF CONCRETE.

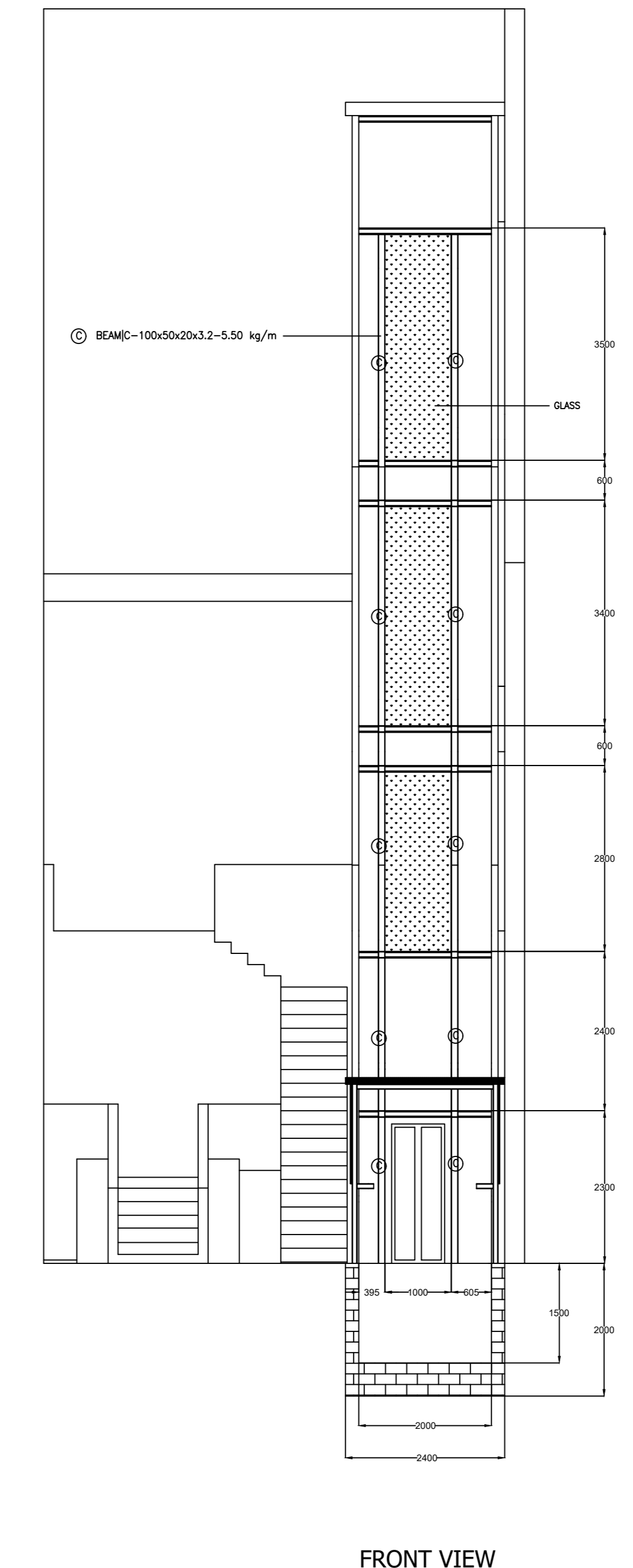
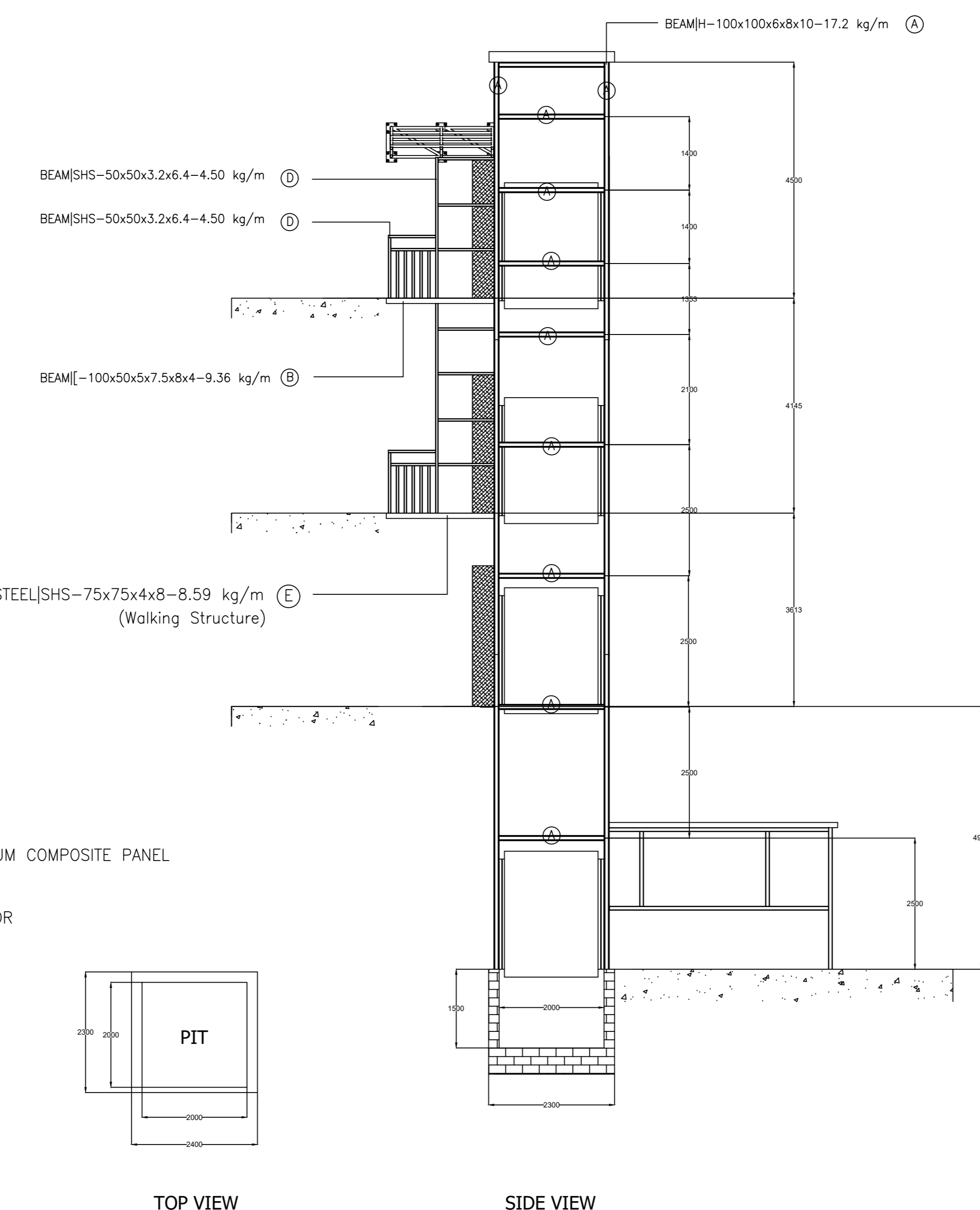
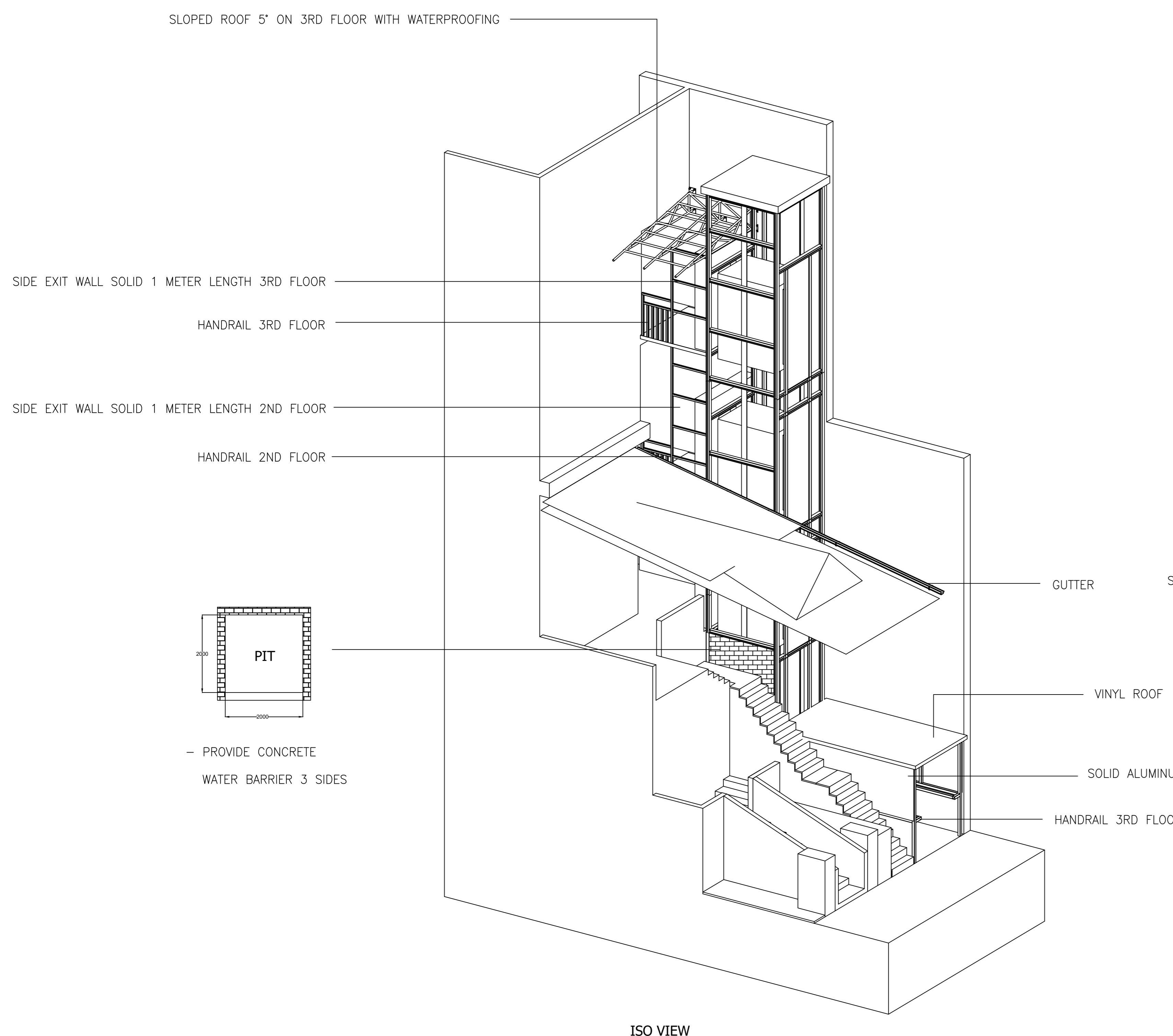
POWER FEEDER (BY OTHERS)

- PLEASE CONSULT THE LIFT CONTRACTOR ABOUT THE DETAILS OF THE POWER SUPPLY TO THE ELEVATOR.
- POWER FEEDER CAPACITY FROM THE ELECTRIC ROOM TO THE ELEVATOR MACHINE ROOM.
 - TRANSFORMER CAPACITY AND PROTECTIVE DEVICE CAPACITY (ONE-FUSE-BREAKER - OR FUSES) IN THE ELECTRIC ROOM.

POWER SUPPLY (BY OTHERS)

- FUSED ISOLATOR TO LOCKABLE IN THE OFF POSITION TO BE PROVIDED FOR EACH LIFT TO SUIT.
- LIFT CONTROL**
3 PHASE 380 VOLTS 5 WIRE. 50 HERTZ. NEUTRAL EARTH
- LIGHTING AND VENTILATION**
- PHASE 220 VOLTS.
 - 15 AMPS LIFT CAR LIGHTING & FAN
 - 15 AMPS SHAFT LIGHTING

REMARKS



M/C ROOM	
OVER HEAD	4500
3-4	4145
2-3	3613
1-2	4995
PIT	1500
FLOOR-FLOOR DISTANCE	

Materials	
(A)	BEAM[H]-100x100x6x8x10-17.2 kg/m
(B)	BEAM[C]-100x50x5x7.5x8x4-9.36 kg/m
(C)	BEAM[C]-100x50x20x3.2-5.50 kg/m
(D)	BEAM[SHS]-50x50x3.2x6.4-4.50 kg/m
(E)	STEEL[SHS]-75x75x4x8-8.59 kg/m

REVISION					
REV.	DATE	REV.NO.	DESCRIPTION	REV.	DATE

PROJECT	: THE NAMAKA II PHUKET	PAGE.1/1	SALES BY
DRAWING NO.	:	REV.00	APPROVED BY :
CONTRACT NO.	:		CHECKED BY : -
BUILDING	:		
LOCATION	:		
OWNER	:		DRAWN BY : MR. JETSADA
MAIN CONTR.	:		SCALE : NONE
ARCHITECT	:		LAYOUT PREPARED BY KTL ELEVATOR
DATE PRELIM	:		

KTL ELEVATOR COMPANY LIMITED.
123/4 MOO 4, KHOK KHAM 2, THEP KASATTRI, THA LANG, PHUKET 83110 THAILAND
TEL:084-999-1499
WWW.KTL ELEVATOR .CO.,LTD.